

# MARINER

LIGHTING PROJECTS



MORE THAN **130** YEARS  
OF LIGHTING HISTORY



# SUMMARY

4 LUXURY HOTELS

18 LUXURY THEATERS AND MOSQUES

32 LUXURY YATCHS

36 LUXURY RESIDENCES

62 WALL BRACKETS

68 TABLE LAMPS

72 FLOOR LAMPS

74 CHANDELIERS





# LUXURY HOTELS



MARINER  
1893

Mariner table lamps at The Plaza Doha, Qatar.





## PALATIAL URBAN LUXURY IN DOHA

**The Plaza Doha** by Anantara invites you to discover the meaning of luxury and embrace a new level of bespoke elegance. That is why they chose Mariner for dressing suit bedrooms, restaurants and common areas such as main entrance with lighting and furniture. Sophistication infused with classic Parisian flourishes.



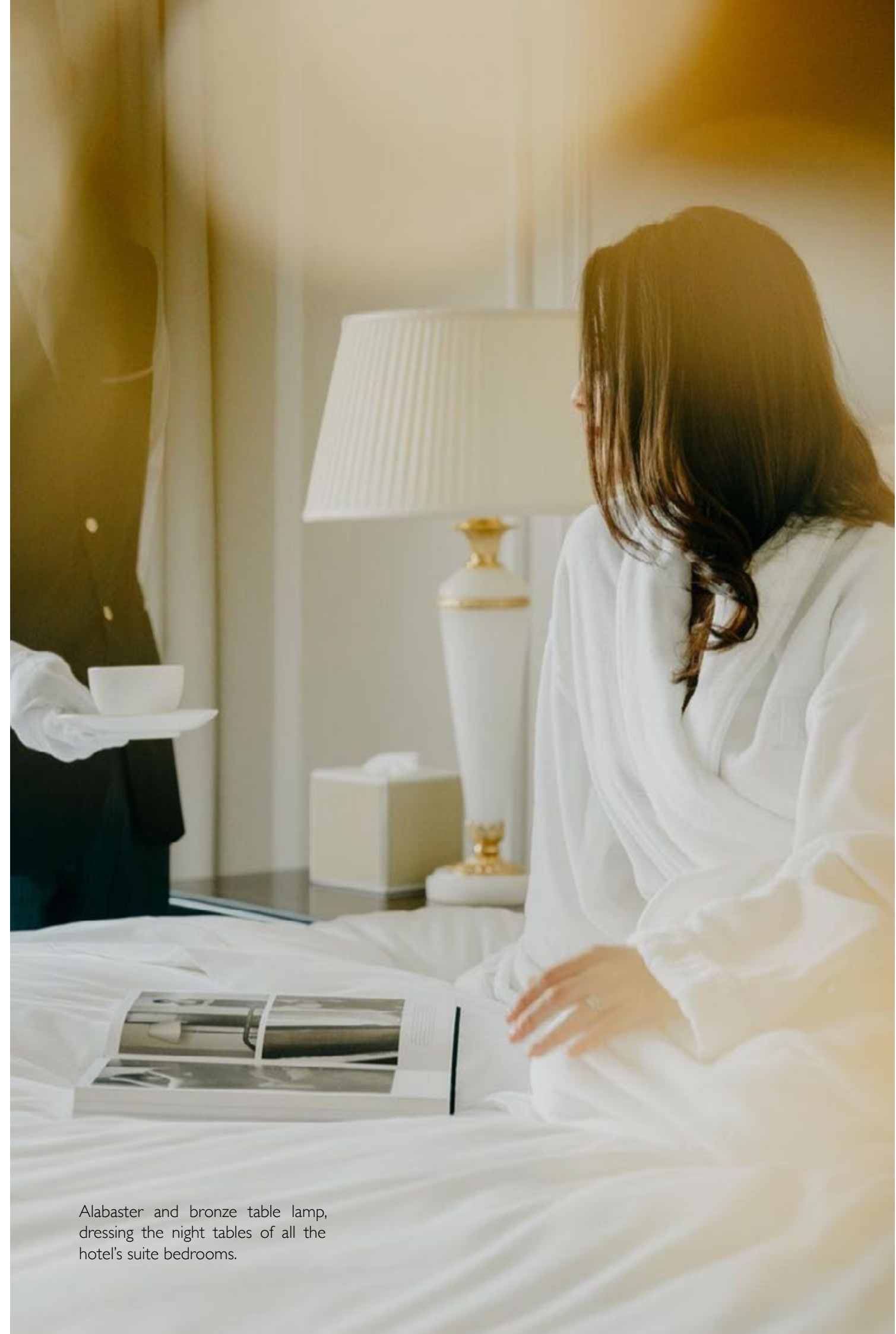


Table lamps, so elegants, giving a touch of light to the living room suite's,



Antique gold floor lamps, located next to the side tables at the hotel's suite bedrooms.





Alabaster and bronze table lamp,  
dressing the night tables of all the  
hotel's suite bedrooms.





Alabaster table lamp located at the front desk.





Wall brackets at the main restaurant, and  
table lamps lighting common areas.





## GLAM OF THE 60's

**Hotel Doral Beach**, located in Miami, chose a custom chandelier for the main entrance, making it the center of attention. Sixties were a gilded age at Miami beach, decorated with great brightness and gold, and where glamorous luxury was present at the most sophisticated hotels.

A twenty four arms lamp with thousands glasses, composed with brass figures decorated with 24k gold.





# LUXURY THEATRES



## THEATRE OF LLIRIA

**Theatre of Liria**, at the earlies 70's. A charming chandelier designed with twenty brass arms with three lights each. Dressed with crystals and 24k gold decorated.

MARINER  
1893



*Sergio Sánchez Puerto*





## GOLDEN AGE OF THE CINEMA

In their heyday, some of the main movie theaters were decorated with Mariner chandeliers, like this magnificent item at the **Rex Cinema of Valencia**.

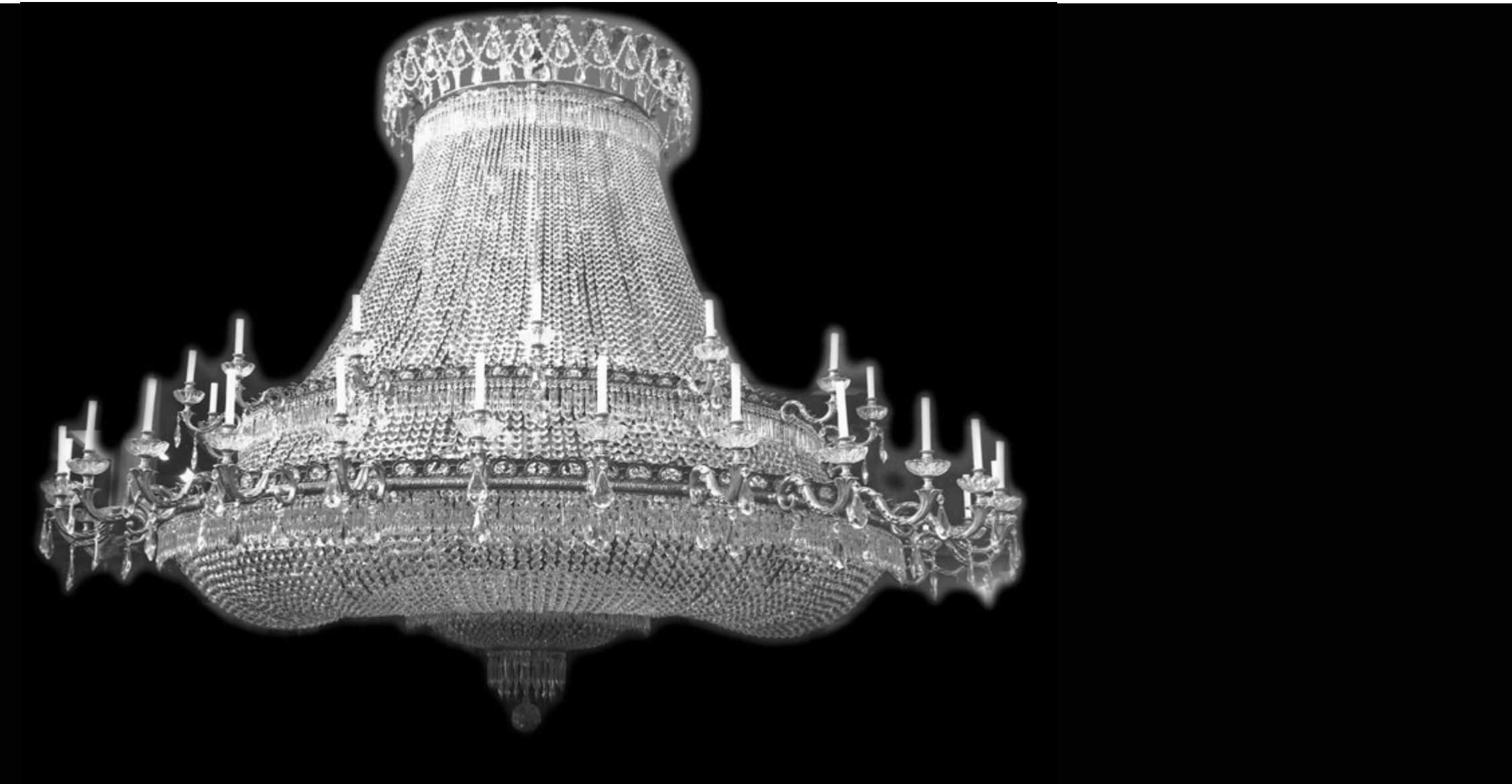


## THE BEAUTY OF ART NOVEAU

**Real Cinema**, in Madrid. A 20's stylish building where were located Mariner chandeliers at the main hall. Beautiful designs composed with unique brass pieces and alabaster elements give them form to an exclusive environment.



MARINER  
1893



## THE IMPOSING OF GREAT STAGES

- The Harkness Theater in NY -





## THE LIGHTS OF KNOWLEDGE

**Business University of Japan** was looking for two different chandeliers which represents the communion of many cultures and countries. They found at Mariner the perfect team to work with and design a unique pieces for a succesful result.







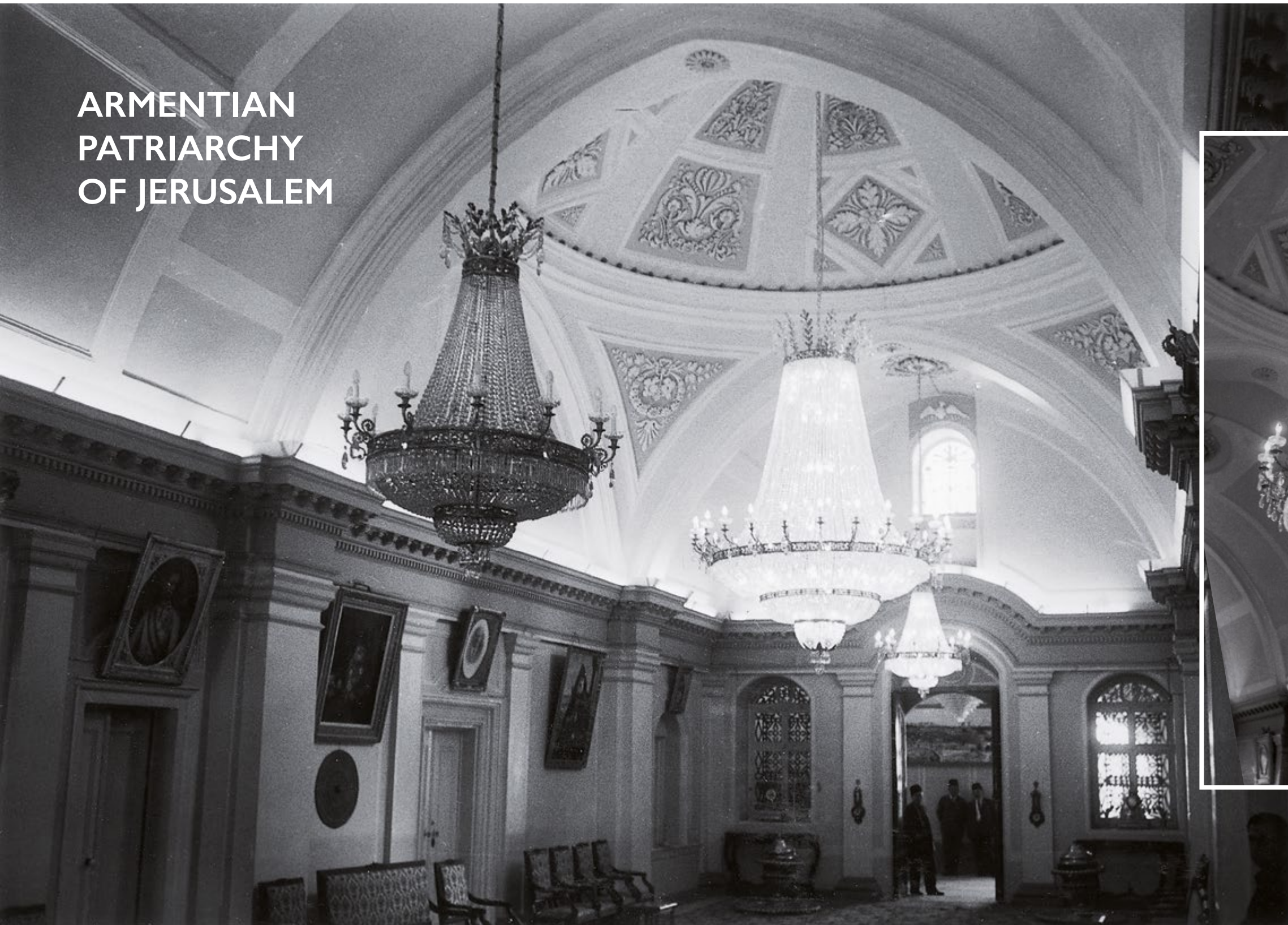
Office equipped with a brass lantern and classical alabaster wall brackets.





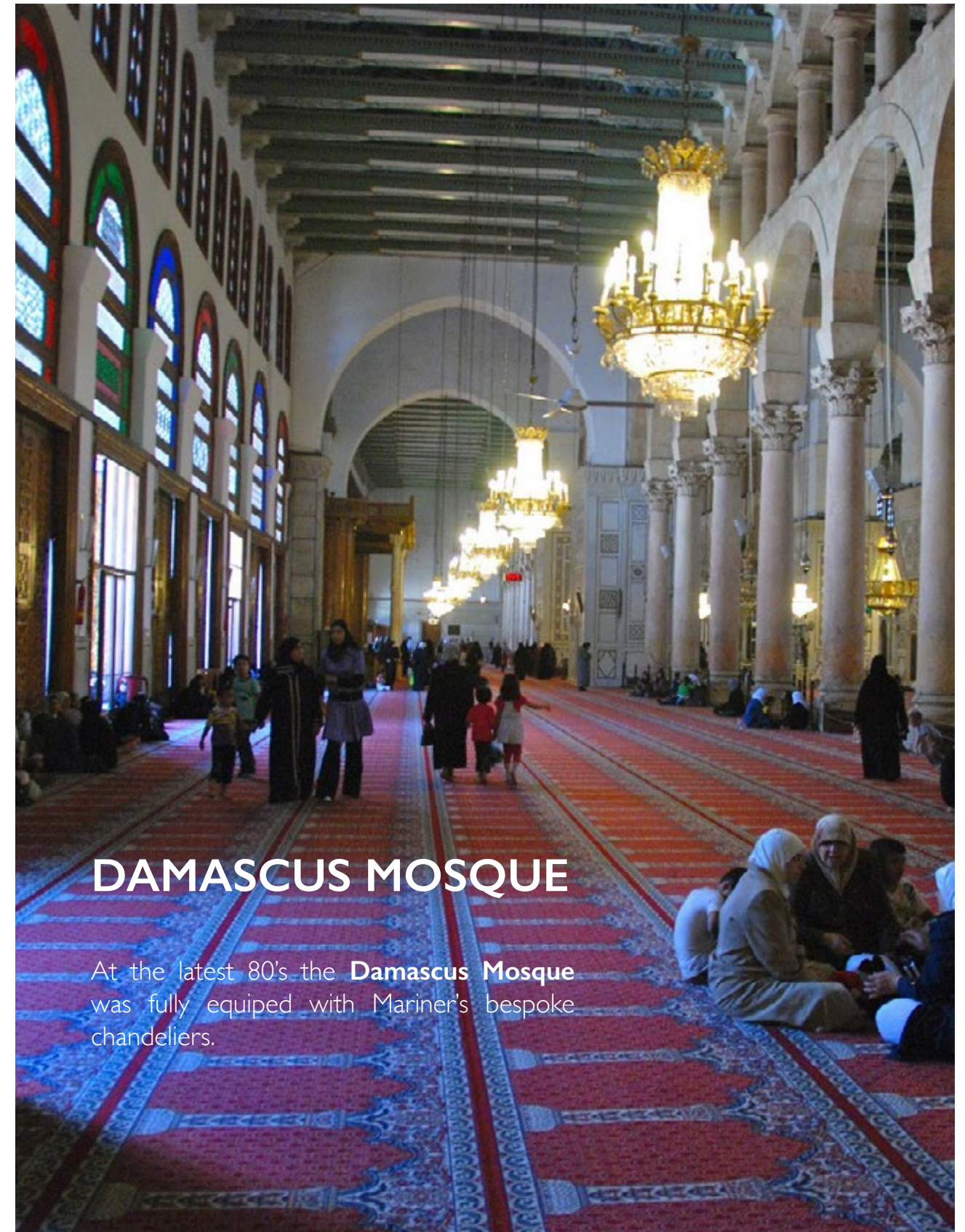
# ARMENTIAN PATRIARCHY OF JERUSALEM

MARINER  
1893



Bespoke chandeliers for the Armentian Patriarchy of Jerusalem at the 70's.





## DAMASCUS MOSQUE

At the latest 80's the **Damascus Mosque** was fully equipped with Mariner's bespoke chandeliers.



LUXURY YATCHS





## THE MAGESTUOSITY OF THE SEA

**Some of the most luxury yachts** has been fully decorated for Mariner team. Furnishing a yacht means having in mind lots of requirements and needs for a good quality experience. Mariner's strongest value in this field is to combine it with sophistication and elegance.





# LUXURY RESIDENCES







## THE POWER OF WISHES

Important residences with meeting rooms, big palaces, charming villas, cosmopolitan apartments. All of them inspired by the wish of reaching a perfect place to stay, a place for being the head of its own live.









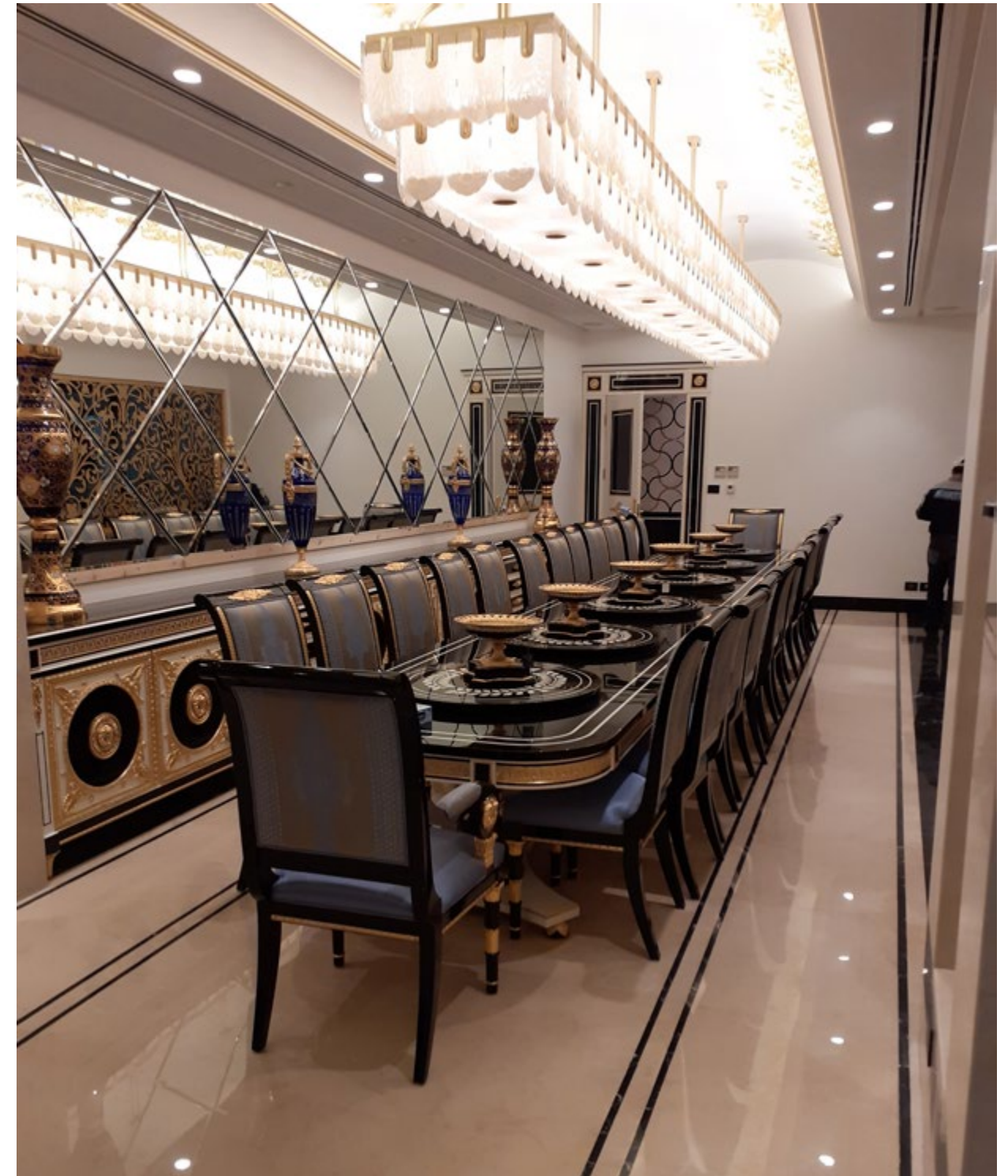
Bespoke lighting at the majlis.  
Twins chandeliers at one of  
the halls.



## PALACES

Comprehensive luxury bespoke project of a private **Palace in Jordan**, where Mariner furniture, lighting, accessories and joinery stand out in splendid harmony and perfectly coordinated by F&N Architects.





Bespoke lighting at the  
main dining room.  
Special chandelier at one  
of the living rooms.





MARINER  
1893



## COSMOPOLITAN APARTMENT

**At the city center of Riga**, a sophisticated apartment was fully equipped with Mariner items. Furniture and lighting added the final touch to a dreamed place to live.









MARINER  
1893

## TIME STANDS IN THIS NEW YORK STATE MANOR

**In the countryside of a fast-paced New York** is located this residence where time seems to stop.

Splendid chandeliers illuminate pompous halls, rich dining rooms and elegant hallways.





Chandeliers, lanterns, ceiling fixtures, table lamps and wall brackets give brightness at this state manor.





MARINER  
1893

## KOLKATA STAYS ON ITS OWN STYLE

**A private villa**, with simple lines but keeping a classic style. Mariner added a plus of chicness with some variants of its collection of classic chandeliers.





MARINER  
1893





## SOPHISTICATED VILLA IN HANOI

**A cozy villa** in Hanoi, crowned by Mariner's lighting as well as the furniture.







**Left.** Dining room projected with Malmaison collection, crowned with a classic chandelier dressed with crystal and finished in Antique gold plated. **Right.** Duck chandelier, made of cast bronze and finished in Antique gold plated. With a touch of black lacker plate.





**20082-0**  
*Wall bracket*  
↑ 89 cm / 35,04"  
↔ 22 cm / 8,66"  
↗ 19 cm / 7,48"  
Q 2 (E14)  
**Finish:** OA/NB (288)  
**Shades:** 1629-91  
**Materials:** Casted Bronze & Black lacquer



**19012-0**  
*Wall bracket*  
99 cm / 38,98"  
46 cm / 18,11"  
25 cm / 9,84"  
2 (E14)  
**Finish:** O.F.(55)  
**Shade:** 1624-73  
**Materials:** Casted Bronze



**19492-0**  
*Wall bracket*  
↓ 61 cm / 24,02"  
↔ 34 cm / 13,39"  
↗ 29 cm / 11,42"  
Q 2 (E14)  
**Finish:** OF/NST (100)  
**Shade:** 1627-58  
**Materials:** Casted Bronze, Crystal & Black lacquer



**19347-0**  
*Wall bracket*  
86 cm / 33,86"  
50 cm / 19,69"  
25 cm / 9,84"  
2 (E14)  
**Finish:** O.F.(55)  
**Shade:** 1627-02  
**Materials:** Casted Bronze





**20261-0**  
*Wall bracket*  
↑ 47 cm / 18,5"  
↔ 40 cm / 15,75"  
↗ 19 cm / 7,48"  
Ø 1 (E14)  
**Finish:** DB (67)  
**Materials:** Casted Bronze & Venetian glass  
Also available with transparent crystal (-1)



**19158-0**  
*Wall bracket*  
↑ 44 cm / 17,32"  
↔ 21 cm / 8,27"  
↗ 15 cm / 5,91"  
Ø 1 (E14)  
**Finish:** OF(55)  
**Materials:** Casted Bronze & Alabaster  
Also available brandy alabaster (-1)



**20301-0**  
*Wall bracket*  
↑ 26 cm / 10,24"  
↔ 26 cm / 10,24"  
↗ 20 cm / 7,87"  
Ø 2 (E14)  
**Finish:** OA (231)  
**Materials:** Casted Bronze  
Also available in OF (55)



**2531-0**  
*Wall bracket*  
↑ 55 cm / 21,7"  
↔ 26 cm / 10,2"  
↗ 20 cm / 7,9"  
Ø 2 (E14)  
**Finish:** OF (55)  
**Materials:** Casted Bronze



**19386-0**  
*Wall bracket*  
↑ 51 cm / 20,08"  
↔ 38 cm / 14,96"  
↗ 20 cm / 7,87"  
Ø 2 (G9)  
**Finish:** Pl.Ant (387)  
**Materials:** Casted bronze & venetian glass



**19386-1**  
*Wall bracket*  
↑ 51 cm / 20,08"  
↔ 38 cm / 14,96"  
↗ 20 cm / 7,87"  
Ø 2 (G9)  
**Finish:** O.F.(55)  
**Materials:** Casted bronze & venetian glass



**20324-0**  
*Wall bracket*  
↑ 42 cm / 16,5"  
↔ 29 cm / 11,4"  
↗ 16 cm / 6,3"  
Ø 2 (E14)  
**Finish:** OA (231)  
**Materials:** Casted Bronze



**20093-0**  
*Wall bracket*  
↑ 47 cm / 18,5"  
↔ 31 cm / 12,2"  
↗ 18 cm / 7"  
Ø 2 (E14)  
**Finish:** OA (231)  
**Materials:** Casted Bronze





20266-0

**Wall bracket**

↑ 22 cm / 8,7"

↔ 12 cm / 4,7"

↗ 16 cm / 6,3"

Q 1(E14)

**Finish:** OA (231)

**Materials:** Casted Bronze



20298-0

**Wall bracket**

↑ 14 cm / 5,5"

↔ 52 cm / 20,5"

↗ 19 cm / 7,5"

Q 2 (G9)

**Finish:** OF(55)

**Materials:** Casted Bronze

Also available in BR.I.(575) and OA (231)



20265-0

**Wall bracket**

↑ 48 cm / 19"

↔ 10 cm / 4"

↗ 17 cm / 6,7"

Q 1(E14)

**Finish:** OA (231)

**Materials:** Casted Bronze



20302-0

**Wall bracket**

↑ 29 cm / 11,4"

↔ 22 cm / 8,7"

↗ 41 cm / 16,1"

Q 1(E14)

**Finish:** OA (231)

**Materials:** Casted Bronze

Also available in OF (55)



20304-0

**Wall bracket**

↑ 31 cm / 12,2"

↔ 14 cm / 5,5"

↗ 17 cm / 6,7"

Q 1(E14)

**Finish:** OA (231)

**Materials:** Casted Bronze & Alabaster

Also available in OF (55)



20282-0

**Wall bracket**

↑ 57 cm / 22,4"

↔ 31 cm / 12,2"

↗ 21 cm / 8,3"

Q 1(E27)

**Finish:** DB/OA/ N.A.B.(595/515)

**Materials:** Casted Bronze & Wood

Also available PLA.B/CA.B (4/490)



20320-0

**Wall bracket**

↑ 30 cm / 11,8"

↔ 7 cm / 2,8"

↗ 17 cm / 6,7"

Q 1(E14)

**Finish:** OA (231)

**Materials:** Casted Bronze



20303-0

**Wall bracket**

↑ 30 cm / 11,8"

↔ 13 cm / 5,12"

↗ 16 cm / 6,3"

Q 1(E14)

**Finish:** OA (231)

**Materials:** Casted Bronze & Alabaster

Also available in OF (55)





**20229-0**

*Table Lamp*

↑ 71 cm / 28"

Ø 45 cm / 17,7"

Q 2 (E27)

**Finish:** OA (231)

**Materials:** Casted Bronze & Crystal

**Shade:** 1624-66

*Also available OF (55)*



**20309-0**

*Table Lamp*

↑ 107 cm / 42,1"

Ø 55 cm / 21,6"

Q 2 (E27)

**Finish:** OA (231)

**Materials:** Casted Bronze & Alabaster

**Shade:** 1624-85



**20308-0**

*Table Lamp*

↑ 107 cm / 42,1"

Ø 55 cm / 21,6"

Q 2 (E27)

**Finish:** OA (231)

**Materials:** Casted Bronze & Black Lacquer

**Shade:** 1624-85





**20249-0**  
*Table Lamp*  
↓ 87 cm / 34,25"  
Ø 50 cm / 19,69"  
Q 2-E27  
**Finish:** LT.B.(559)  
**Materials:** Venetian glass & brass  
**Shade:** 1629-025



**20245-1**  
*Table Lamp*  
↓ 81 cm / 31,89"  
Ø 45 cm / 17,72"  
Q 2 (E27)  
**Finish:** DB / N.T.(592)  
**Materials:** Venetian glass & brass  
**Shade:** 1629-017



**20318-0**  
*Table Lamp*  
↓ 74 cm / 29,1"  
Ø 45 cm / 17,72"  
Q 1 (E27)  
**Finish:** OA (231)  
**Materials:** Casted Bronze  
**Shade:** 1629-050



**20317-0**  
*Table Lamp*  
↓ 77 cm / 30,3"  
Ø 45 cm / 17,72"  
Q 1 (E27)  
**Finish:** OA (231)  
**Materials:** Casted Bronze & Alabaster  
**Shade:** 1629-065



**20314-0**  
*Table Lamp*  
↓ 77 cm / 30,3"  
Ø 45 cm / 17,72"  
Q 2 (E27)  
**Finish:** OA (231)  
**Materials:** Casted Bronze & Alabaster  
**Shade:** 1629-062



**20310-0**  
*Table Lamp*  
↓ 82 cm / 32,3"  
Ø 45 cm / 17,72"  
Q 1 (E27)  
**Finish:** OA /NB (288)  
**Materials:** Casted Bronze & Black Lacquer  
**Shade:** 1629-050



**20149-0**  
*Table Lamp*  
↓ 73 cm / 28,74"  
Ø 45 cm / 17,72"  
Q 1-E27  
**Finish:** OA.(231)  
**Materials:** Crystal, Casted bronze & Marble base  
**Shade:** 1629-050  
  
*Also available PL.ANT. (387)*



**20306-0**  
*Table Lamp*  
↓ 67 cm / 26,38"  
Ø 45 cm / 17,72"  
Q 1 (E27)  
**Finish:** OA.(231)  
**Materials:** Crystal & Casted bronze  
**Shade:** 1629-050



**20316-0**  
*Table Lamp*  
↓ 77 cm / 30,3"  
Ø 45 cm / 17,72"  
Q 1 (E27)  
**Finish:** OA (231)  
**Materials:** Casted Bronze & Venetian Glass  
**Shade:** 1629-064



**20315-0**  
*Table Lamp*  
↓ 80 cm / 31,5"  
Ø 55 cm / 19,7"  
Q 2 (E27)  
**Finish:** OA (231)  
**Materials:** Casted Bronze & Alabaster  
**Shade:** 1629-063



**20307-0**  
*Table Lamp*  
↓ 75 cm / 29,5"  
Ø 45 cm / 17,72"  
Q 2 (E27)  
**Finish:** OA /NB (288)  
**Materials:** Casted Bronze & Black Lacquer  
**Shade:** 1629-85



**20295-0**  
*Table Lamp*  
↓ 85 cm / 33,4"  
Ø 50 cm / 19,7"  
Q 2 (E27)  
**Finish:** OA (231)  
**Materials:** Casted Bronze & Alabaster  
**Shade:** 1629-046





20283-0

*Floor Lamp*

↑ 175 cm / 69"

Ø 60 cm / 23,6"

Q 1 (E27)

**Finish:** DB/OA / N.A.B. (595/515)

**Materials:** Casted Bronze & Crystal

**Shade:** 1629-044 / 1629-039

*Also available PLA.B / CA.B (4/490)*



20296-0

*Floor Lamp*

↑ 176 cm / 69,3"

Ø 55 cm / 21,6"

Q 2 (E27)

**Finish:** OA (231)

**Materials:** Casted Bronze & Crystal

**Shade:** 1629-047

*Also available PL.ANT (387)*



20313-0

*Floor Lamp*

↑ 180 cm / 70,9"

Ø 55 cm / 21,6"

Q 2 (E27)

**Finish:** OA (231)

**Materials:** Casted Bronze, Brass & Crystal

**Shade:** 1629-047



20260-0

*Floor Lamp*

↑ 186 cm / 73,2"

Ø 55 cm / 21,6"

Q 2 (E27)

**Finish:** DB (67)

**Materials:** Brass & Venetian Glass

**Shade:** 1629-028



20297-0

*Floor Lamp*

↑ 173 cm / 73,2"

Ø 55 cm / 21,6"

Q 2 (E27)

**Finish:** OA (231)

**Materials:** Brass, Casted Bronze & Venetian Glass

**Shade:** 1629-047

*Also available PL. ANT (387)*





18833-0

**Lantern**

↑ 95 cm / 37,4"

Ø 50 cm / 19,69"

Q 4 (E14)

**Finish:** OA.(231)

**Materials:** Casted Bronze & Glass



20130-0

**Lantern**

↑ 90 cm / 35,43"

Ø 72 cm / 28,35"

Q 6 (E14)

**Finish:** O.F.(55)

**Materials:** Casted Bronze & Glass



19384-0

**Chandelier**

↑ 68 cm / 26,77"

Ø 71 cm / 27,95"

Q 6+4 (G9)

**Finish:** O.F.(55)

**Materials:** Casted bronze & venetian glass

Also available with gold glass (-1)



19813-0

**Chandelier**

↑ 112 cm / 44,09"

Ø 110 cm / 43,31"

Q 10+5 (E14)

**Finish:** O.F.(55)

**Shade:** 1627-58

**Materials:** Casted bronze & venetian glass



19602-1

**Ceiling fixture**

↑ 47 cm / 18,50"

Ø 79 cm / 31,10"

Q 6+6 (E14)

**Finish:** O.F. (55)

**Materials:** Casted bronze & Swarovski elements

Also available with Scholer crystals (.0)



20270-0

**Chandelier**

↑ 110 cm / 43,31"

Ø 74 cm / 29,13"

Q 24 (E14)

**Finish:** DB (67)

**Materials:** Casted bronze & Venetian glass



19197-0

**Chandelier**

↑ 100 cm / 39,37"

Ø 93 cm / 36,61"

Q 8 (E14)

**Finish:** O.F./NST (100)

**Shade:** 1624-94 (Also available with 1627-05)

**Materials:** Casted bronze & Brass

Also available with shade 1627-05 and OA/NB (288)



20104-0

**Chandelier**

↑ 220 cm / 86,61"

Ø 177 cm / 69,69"

Q 18+9+6+18 (E14)

**Finish:** OF/NST (100)

**Shade:** 1629-94

**Materials:** Casted bronze & scholer crystal





**19893-0**  
**Chandelier**  
↑ 225 cm / 88,6"  
Ø 173 cm / 68,11"  
Q 27 + 30 (E14)  
**Finish:** OA (231)  
**Materials:** Casted bronze & Scholer crystal  
  
Also available in OF (55)



**18933-0**  
**Chandelier**  
↑ 94 cm / 37"  
Ø 90 cm / 35,43"  
Q 8 (E12)  
**Finish:** O.A. (231)  
**Materials:** Casted bronze



**20037-1**  
**Chandelier**  
↑ 210 cm / 83"  
Ø 150 cm / 59"  
Q 15+10+5+17 (E12)  
**Finish:** PLA.B. (4)  
**Materials:** Casted bronze, Brass & Crystal  
  
Also available without glass shades (-0)  
and in OF (55) and CR.B. (420)



**20187-0**  
**Chandelier**  
↑ 129 cm / 50,79"  
Ø 98 cm / 38,58"  
Q 12 (E14)  
**Finish:** OA/NB(288)  
**Shade:** 1629-011  
**Materials:** Casted bronze , Scholer crystal & Black lacquer



**20141-1**  
**Chandelier**  
↑ 147 cm / 57,87"  
Ø 102 cm / 40,16"  
Q 38 (E12)  
**Finish:** OA (231)  
**Materials:** Venetian Glass & Casted Bronze



**19889-0**  
**Chandelier**  
↑ 192 cm / 75,59"  
Ø 180 cm / 70,87"  
Q 18 + 4 (E14)  
**Finish:** OA (231)  
**Materials:** Casted bronze & Scholer crystal





**MARINER**  
1893

## **MODERN AND CLASSIC BLEND**

There are no limits when a project  
is on your mind. They shouldn't be  
when it is on our hands.





SUPREME LUXURY EXPERIENCE

MARINER  
1893

DISCOVER MORE AT  
[MARINERLUXURY.COM](https://marinerluxury.com)

